

糖链功能分析

GlyScope和凝集素

糖链功能分析

GlyScope和凝集素

Lectins Specific for Sialic Acid (Sia) 唾液酸特异性凝集素 (SIA)

产品名称	标记	产品编号	规格	保存温度
Maackia amurensis [MAM] 朝鲜槐 [MAM]	Unlabeled	JOM-J110	2 mg	4°C
	Biotin	JOM-J210	1 mg	4°C
	Agarose	JOM-J310	2 ml	4°C
	FITC	JOM-J510	1 mg	-20°C
Sambucus sieboldiana [SSA] 无梗接骨木 [SSA]	Unlabeled	JOM-J118	5 mg	4°C
	Biotin	JOM-J218	1 mg	4°C
	Agarose	JOM-J318	2 ml	4°C
	FITC	JOM-J518	1 mg	-20°C
Triticum vulgare (Wheat germ) [WGA] 小麦 (小麦胚芽) [WGA]	Unlabeled	JOM-J120	5 mg	4°C
	Biotin	JOM-J220	1 mg	4°C
	Agarose	JOM-J320-2ML	2 ml	4°C
	Agarose	JOM-J320-5ML	5 ml	4°C
	HRP	JOM-J420	1 mg	-20°C
	FITC	JOM-J520	1 mg	-20°C

Lectin Sets 凝集素套装

产品名称	标记	产品编号	规格	保存温度
Lectin Set-Biotin 1 (Con A/DBA/LCA/PHA-E4/PNA/ECA/UEA-I/WGA)	Biotin	JOM-J2S1	1 set	-20°C
Lectin Set-Biotin 2 (ABA/DSA/Lotus/MAM/PHA-L4/SBA/SSA)	Biotin	JOM-J2S2	1 set	-20°C
Lectin Set-Agarose 1 (Con A/LCA/ECA/WGA)	Agarose	JOM-J3S1	1 set	4°C
Lectin Set-Agarose 1 (for elution) Sugar Set-1	-	JOM-J3S4	1 set	4°C
Lectin Set-Agarose 2 (PHA-E4/PHA-L4/PNA/UEA-I)	Agarose	JOM-J3S2	1 set	4°C
Lectin Set-Agarose 2 (for elution) Sugar Set-2	-	JOM-J3S5	1 set	4°C
Lectin Set-Agarose 3 (AAL/DSA/MAM/SSA)	Agarose	JOM-J3S3	1 set	4°C
Lectin Set-Agarose 3 (for elution) Sugar Set-3	-	JOM-J3S6	1 set	4°C
Lectin Set-HRP 1 (Con A/LCA/PHA-E4/PNA/ECA/WGA)	HRP	JOM-J4S1	1 set	-20°C
Lectin Set-HRP 2 (Con A/DBA/LCA/PHA-E4/PNA/ECA/UEA-I/WGA)	HRP	JOM-J4S2	1 set	-20°C
Lectin Set-FITC 1 (Con A/DBA/LCA/PHA-E4/PNA/ECA/UEA-I/WGA)	FITC	JOM-J5S1	1 set	-20°C
Lectin Set-FITC 2 (ABA/DSA/Lotus/MAM/PHA-L4/SBA/SSA)	FITC	JOM-J5S2	1 set	-20°C

产品名称	产品编号	规格	保存温度
Aleuria aurantia-HPLC Column [AAL] 橙黄网胞盘菌HPLC 色谱柱[AAL]	J601-L	1 pc	RT
Aleuria aurantia-HPLC Column Short [AAL] 橙黄网胞盘菌HPLC 色谱柱[AAL]	J601-S	1 pc	RT
Arachis hypogaea (Peanut)-HPLC Column [PNA] 花生-HPLC 色谱柱[PNA]	JOM-J614	1 pc	RT
Canavalia ensiformis (Jack bean)-HPLC Column [Con A] 刀豆-HPLC 色谱柱[ConA]	JOM-J603	1 pc	RT
Datura stramonium-HPLC Column [DSA] 曼陀罗-HPLC 色谱柱[DSA]	JOM-J605	1 pc	RT
Lens culinaris-HPLC Column [LCA] 扁豆-HPLC 色谱柱[LCA]	JOM-J607	1 pc	RT
Maackia amurensis-HPLC Column [MAM] 山槐-HPLC 色谱柱[PHA-E4]	JOM-J610	1 pc	RT
Phaseolus vulgaris-HPLC Column [PHA-E4] 菜豆-HPLC 色谱柱[PHA-E4]	JOM-J611	1 pc	RT
Sambucus sieboldiana-HPLC Column [SSA] 无梗接骨木-HPLC 色谱柱[SSA]	JOM-J618	1 pc	RT
Triticum vulgare (Wheat germ)-HPLC Column [WGA] 小麦 (小麦胚芽) HPLC 色谱柱 [WGA]	JOM-J620	1 pc	RT

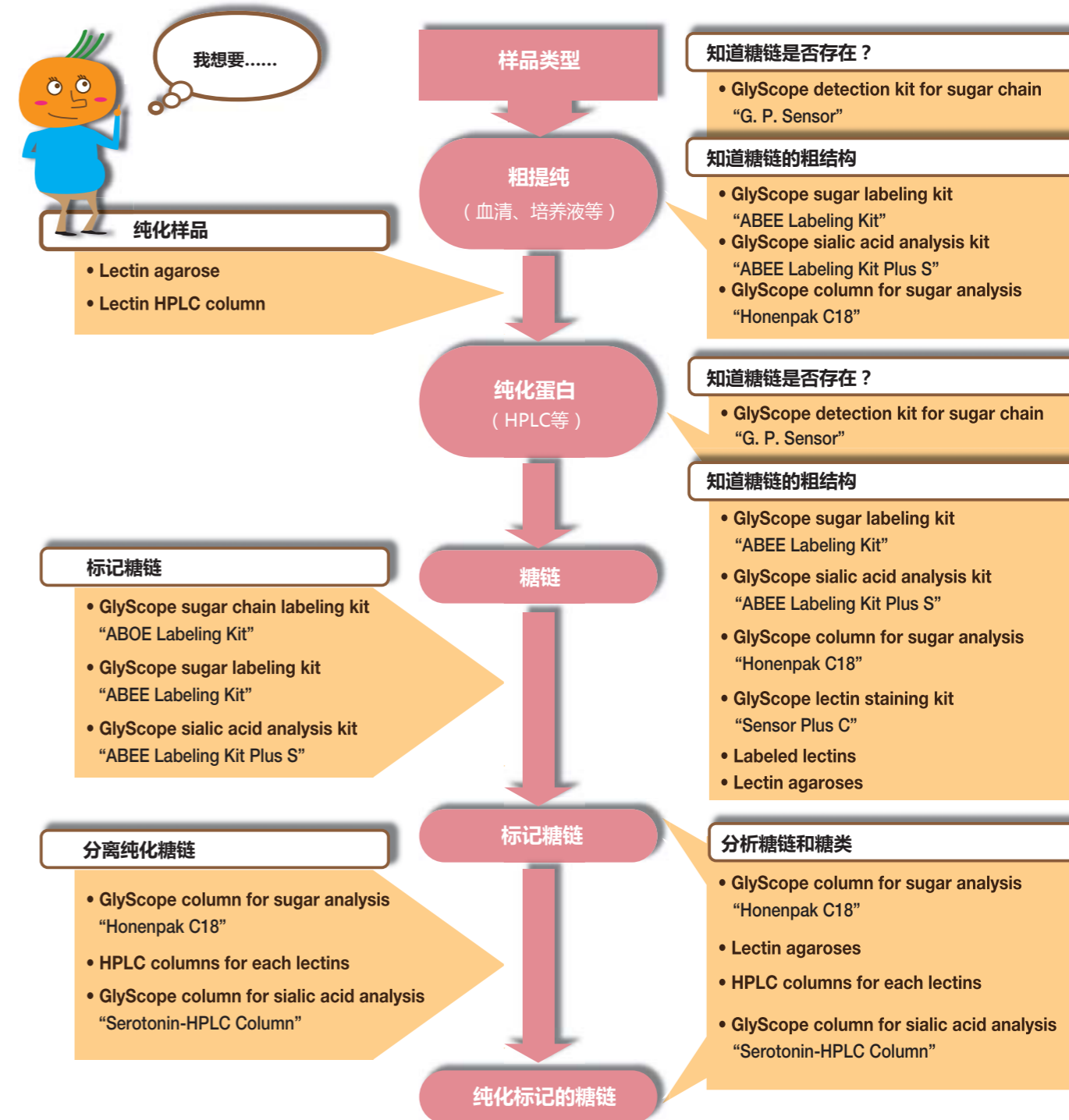
产品名称	标记	产品编号	规格	保存温度
Lectin Anti-H 凝集素抗体-H	Unlabeled	JOM-J121	8 ml	4°C
Lectin Anti-H Strong 凝集素抗体-H 增强型	Unlabeled	JOM-J122	2 ml	4°C

HPLC Columns for Lectins
凝集素HPLC
色谱柱

Antibodies for Lectin
凝集素抗体

众所周知，糖链可与细胞中的蛋白质（糖蛋白）和脂质（糖脂）结合。而糖蛋白和糖脂在生物体内扮演者各种作用。

选择你所需要的产品



全国代理

Boppard

宝柏·中国

www.boppard.cn
info@boppard.cn

北京 Tel: 010 85804838
上海 Tel: 021 62884751
广州 Tel: 020 87326381
香港 Tel: 852 27999019



COSMO BIO Co., LTD.

TOYO EKIMAE BLDG. 2-20, TOYO 2-CHOME,
KOTO-KU. TOKYO 135-0016, JAPAN
TEL : (81)3-5632-9617
FAX : (81)3-5632-9618
e-mail : export@cosmobio.co.jp
URL : www.cosmobio.com

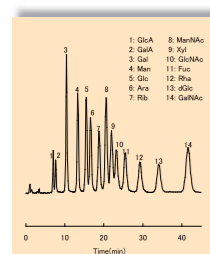


COSMO BIO Co., LTD.

GlyScope

用于糖链分析

- 特点 • 与实验室常用仪器兼容
- 快速分析



Analytic Results of GlyScope ABEE Labeling Kit (Cat. No. JOM-J710)

产品名称	标签	产品编号	规格	保存温度
GlyScope Sensor plus C, Lectin Staining Kit		JOM-J701	1 kit	4°C
GlyScope G. P. Sensor		JOM-J702	1 kit	4°C
GlyScope Chitooligo-Agarose		JOM-J703	5 ml	4°C
GlyScope Fucose-Agarose		JOM-J704	5 ml	4°C
GlyScope Lactose-Agarose		JOM-J705	5 ml	4°C
GlyScope Maltose-Agarose		JOM-J706	5 ml	4°C
GlyScope Melibiose-Agarose		JOM-J707	5 ml	4°C
GlyScope Carbohydr-Agarose Set		JOM-J708	1 set	4°C
GlyScope Serotonin-HPLC Column		JOM-J709-L	1 pc	RT
GlyScope Serotonin-HPLC Column Short		JOM-J709-S	1 pc	RT
GlyScope ABEE Labeling Kit		JOM-J710	1 kit	-20°C
GlyScope ABEE Labeling Kit Plus S w/o Acetic Anhydride		JOM-J711-EX	1 kit	-20°C
GlyScope Solvent Set (for ABEE Labeling Kit)		JOM-J712	1 set	RT
GlyScope Monosaccharide Mixture-5 (for ABEE Labeling Kit)	Unlabeled	JOM-J713	0.5 ml	-20°C
GlyScope Monosaccharide Mixture-11 (for ABEE Labeling Kit)	Unlabeled	JOM-J714	0.5 ml	-20°C
GlyScope Honenpak C18 (for ABEE Labeling Kit)		JOM-J715	1 pc	RT

Lectins
凝集素

Lectin 是一种糖蛋白可与糖链结合, 与分化、发育、免疫、感染等有关。

Lectins Specific for Galactose (Gal)/N-acetylgalactosamine (GalNAc)

半乳糖 (GAL) / N-乙酰半乳糖胺 (GalNAc) 特异性凝集素

产品名称	标记	产品编号	规格	保存温度
<i>Agaricus bisporus</i> [ABA] 双孢蘑菇[ABA]	Unlabeled Biotin FITC	JOM-J102 JOM-J202 JOM-J502	5 mg 1 mg 1 mg	4°C 4°C -20°C
<i>Dolichos biflorus</i> [DBA] 双花豆[DBA]	Unlabeled Biotin HRP FITC	JOM-J104 JOM-J204 JOM-J404 JOM-J504	5 mg 1 mg 1 mg 1 mg	4°C 4°C -20°C -20°C
<i>Erythrina cristagalli</i> [ECA] 鸡冠刺桐[ECA]	Unlabeled Biotin Agarose	JOM-J106 JOM-J206 JOM-J306	5 mg 1 mg 2 ml	4°C 4°C 4°C
<i>Phaseolus vulgaris</i> [PHA-E4] 菜豆[PHA-E4]	Unlabeled Biotin Agarose Agarose HRP FITC	JOM-J111 JOM-J211 JOM-J311-2ML JOM-J311-5ML JOM-J411 JOM-J511	5 mg 1 mg 2 ml 5 ml 1 mg 1 mg	4°C 4°C 4°C 4°C -20°C -20°C
<i>Phaseolus vulgaris</i> [PHA-L4] 菜豆[PHA-L4]	Unlabeled Biotin Agarose HRP FITC	JOM-J112 JOM-J212 JOM-J312 JOM-J412 JOM-J512	5 mg 1 mg 2 ml 1 mg 1 mg	4°C 4°C 4°C -20°C -20°C
<i>Phaseolus vulgaris</i> [PHA-P] 菜豆[PHA-P]	Unlabeled	JOM-J113	50 mg	4°C
<i>Arachis hypogaea</i> (Peanut) [PNA] 花生[PNA]	Unlabeled Biotin Agarose HRP FITC	JOM-J114 JOM-J214 JOM-J314 JOM-J414 JOM-J514	5 mg 1 mg 2 ml 1 mg 1 mg	4°C 4°C 4°C -20°C -20°C
<i>Glycine max</i> (Soybean) [SBA] 黄豆[SBA]	Unlabeled Biotin Agarose HRP FITC	JOM-J117 JOM-J217 JOM-J317 JOM-J417 JOM-J517	5 mg 1 mg 2 ml 1 mg 1 mg	4°C 4°C 4°C -20°C -20°C

Lectins Specific for Mannose (Man) 甘露糖特异性凝集素 (MAN)

产品名称	标记	产品编号	规格	保存温度
<i>Canavalia ensiformis</i> (Jack bean) [Con A] 刀豆[Con]	Unlabeled Biotin Agarose Agarose HRP FITC	JOM-J103 JOM-J203 JOM-J303-100ML JOM-J303-10ML JOM-J403 JOM-J503	500 mg 5 mg 100 ml 10 ml 2 mg 10 mg	4°C 4°C 4°C 4°C -20°C -20°C
<i>Lens culinaris</i> [LCA] 扁豆[LCA]	Unlabeled Biotin Agarose HRP FITC	JOM-J107 JOM-J207 JOM-J307 JOM-J407 JOM-J507	5 mg 1 mg 5 ml 1 mg 1 mg	4°C 4°C 4°C -20°C -20°C
<i>Lens culinaris</i> [LCA-A (isolectin A)] 扁豆[LCA-A(isolectin A)]	Unlabeled	JOM-J108	5 mg	4°C
<i>Pisum sativum</i> [PSA] 豌豆	Unlabeled Agarose	JOM-J115 JOM-J315	5 mg 2 ml	4°C 4°C

Lectins Specific for Fucose (Fuc) 岩藻糖 (Fuc) 特异性凝集素

产品名称	标记	产品编号	规格	保存温度
<i>Aleuria aurantia</i> [AAL] 橙黄网胞盘菌[AAL]	Agarose FITC	J301 J501	1 ml 1 mg	4°C 4°C
<i>Aleuria aurantia</i> [AAL], recombinant 重组橙黄网胞盘菌[AAL]	Unlabeled Biotin	JOM-J101-R JOM-J201-R	1 mg 1 mg	4°C 4°C
<i>Lotus tetragonolobus</i> [Lotus] 翅荚百脉根[Lotus]	Unlabeled Biotin Agarose FITC	JOM-J109 JOM-J209 JOM-J309 JOM-J509	5 mg 1 mg 2 ml 1 mg	4°C 4°C 4°C -20°C
<i>Ulex europaeus</i> [UEA-I] 荆豆[UEA-I]	Unlabeled Biotin Agarose HRP FITC	JOM-J119 JOM-J219 JOM-J319 JOM-J419 JOM-J519	2 mg 1 mg 2 ml 1 mg 1 mg	4°C 4°C 4°C -20°C -20°C
<i>Lens culinaris</i> [LCA] 扁豆[LCA]	Unlabeled Biotin Agarose HRP FITC	JOM-J107 JOM-J207 JOM-J307 JOM-J407 JOM-J507	5 mg 1 mg 5 ml 1 mg 1 mg	4°C 4°C 4°C -20°C -20°C
<i>Lens culinaris</i> [LCA-A (isolectin A)] 扁豆[LCA-A(isolectin A)]	Unlabeled	JOM-J108	5 mg	4°C
<i>Pisum sativum</i> [PSA] 豌豆[PSA]	Unlabeled Agarose	JOM-J115 JOM-J315	5 mg 2 ml	4°C 4°C

Lectins Specific for N-acetylglucosamine (GlcNAc)

N-乙酰氨基葡萄糖 (GlcNAc) 特异性凝集素

产品名称	标记	产品编号	规格	保存温度
<i>Datura stramonium</i> [DSA] 曼陀罗[DSA]	Unlabeled Biotin Agarose HRP FITC	JOM-J105 JOM-J205 JOM-J305 JOM-J405 JOM-J505	5 mg 1 mg 2 ml 1 mg 1 mg	4°C 4°C 4°C -20°C -20°C
<i>Phytolacca americana</i> [PWM] 美洲商陆[PWM]	Unlabeled Agarose	JOM-J116 JOM-J316	5 mg 5 ml	4°C 4°C
<i>Triticum vulgare</i> (Wheat germ) [WGA] 小麦 (小麦胚芽) [WGA]	Unlabeled Biotin Agarose Agarose HRP FITC	JOM-J120 JOM-J220 JOM-J320-2ML JOM-J320-5ML JOM-J420 JOM-J520	5 mg 1 mg 2 ml 5 ml 1 mg 1 mg	4°C 4°C 4°C 4°C -20°C -20°C